



Maximo 7.5 MOC Solution with DocWorkspace Integration

by Moe El-Husseini – Project Manager

June 7th, 2012

Agenda

- About MEG
- Previous Solution
- MEG MOC Workflow
- Maximo MOC Solution
- Integration with DocWorkspace
- Demo
- Q&A

About MEG

- 600 employees
- InSitu Development in Athabasca Oil Sands Region
- 50% Ownership in Access Pipeline that runs from Christina Lake to Edmonton
- 100% Ownership in Stonefell terminal , a 900,000 barrel storage facility

MEG Energy's Growth Plan

MEG Energy's Growth Plan			
	Start-up	Incremental design capacity (barrels per day)	Cumulative design capacity (barrels per day)
Christina Lake Phases 1&2	In production	25,000	25,000
Christina Lake Phase 2B	2013	35,000	60,000
Christina Lake Phase 3A	2016	50,000	110,000
Christina Lake Phase 3B	2018	50,000	160,000
Surmont Phase 1	2018	50,000	210,000
Christina Lake Phase 3C	2020	50,000	260,000

Previous Solution



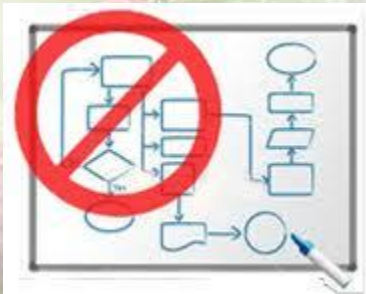
Legacy Technology



Limited Scalability



Slow Performance



No workflow

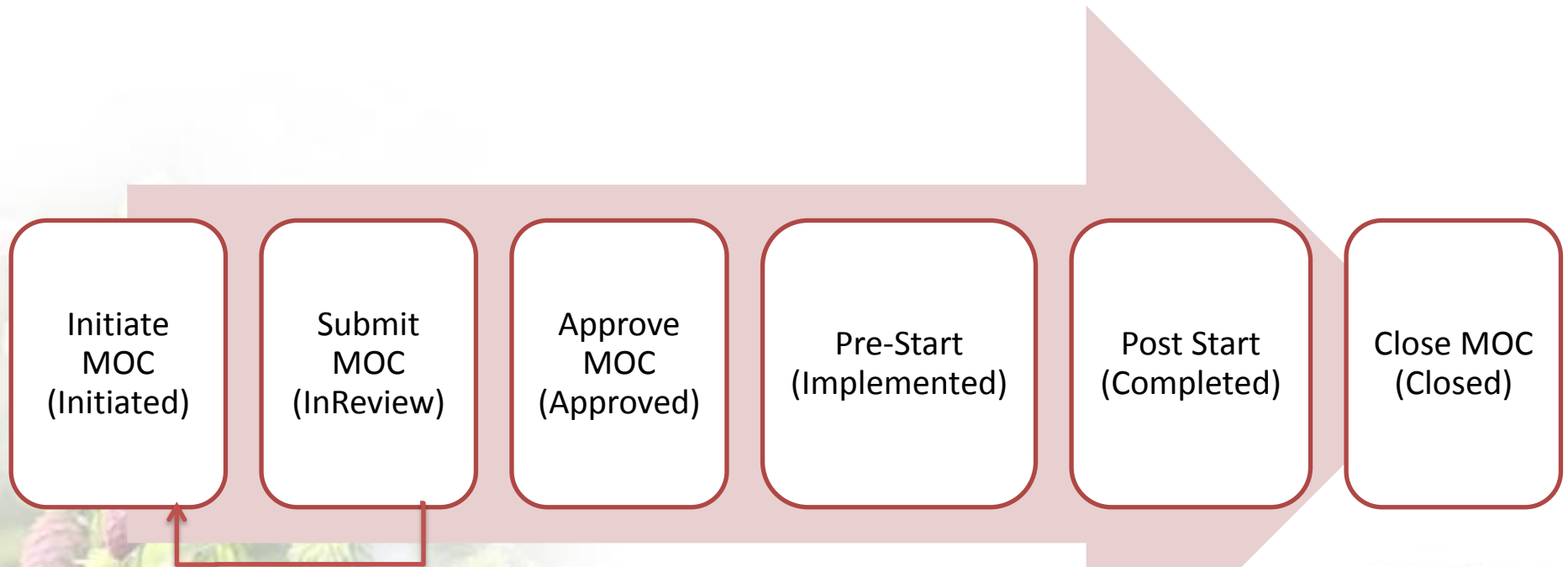


No Audit Trail



Not Compliant

MEG MOC Workflow



Maximo MOC Solution

Automate Workflow

Automate Risk Assessment

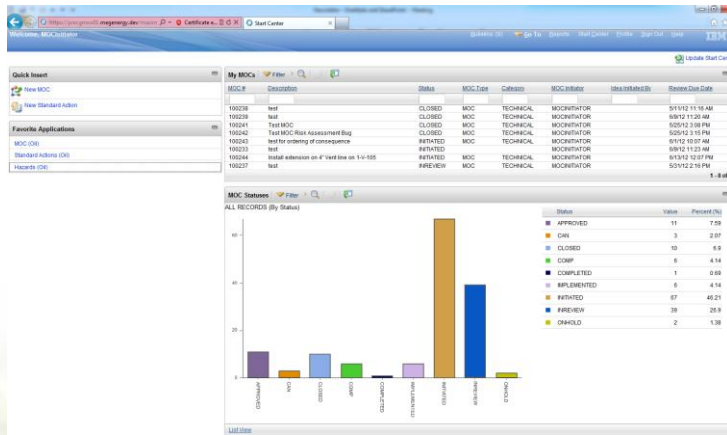
Automatically Assign Approvers

Track Pre/Post start Actions

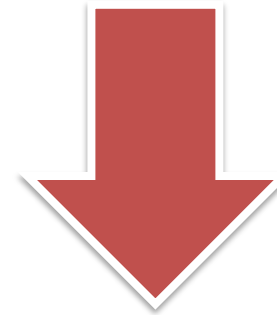
Manage Delegation of Authority

Scalable document management
solution

Integration with DocWorkspace



Upload Attachment View Attachment



Type Name

- Attachment Type : General (1)
 - ABSA NEW
- Attachment Type : IFC Drawings (1)
 - MOC 100244 Drawing NEW
- Attachment Type : PSSR (1)
 - MOC 100244 PSSR NEW

[Add document](#)



Name * MOC Drawing .xps

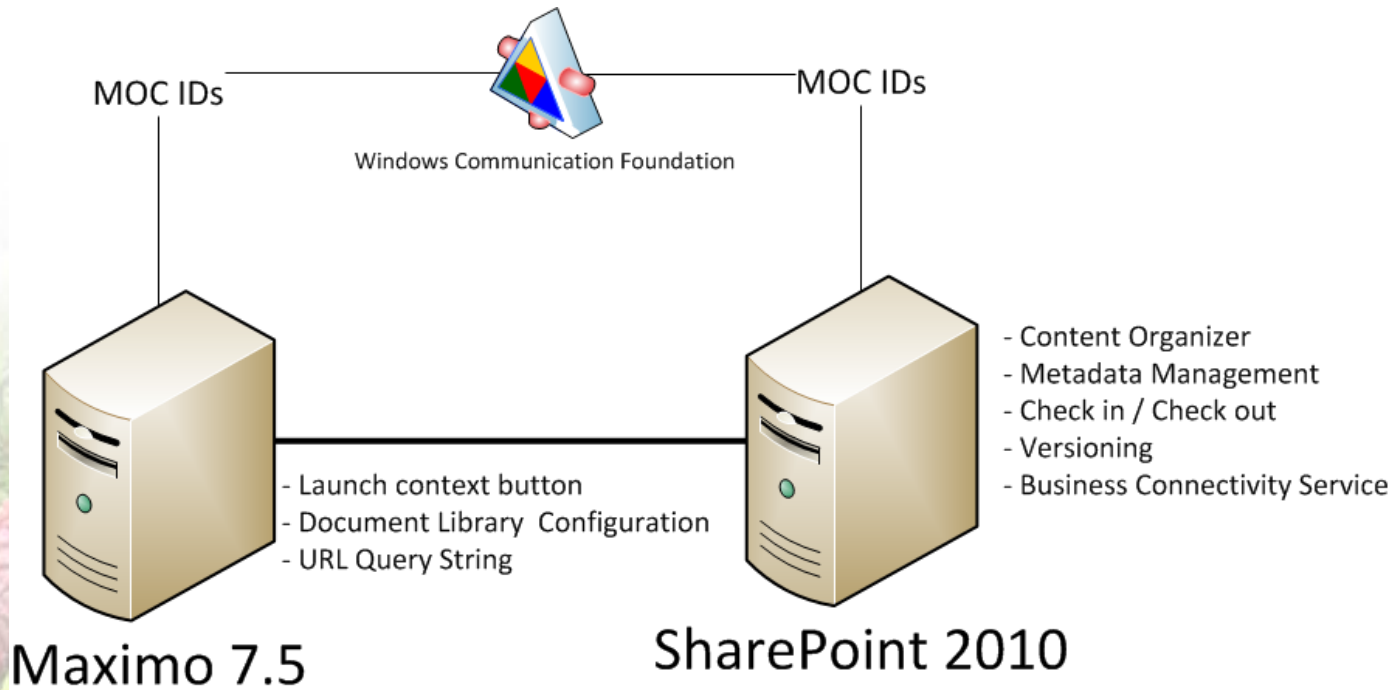
Title * Please complete the title field

Attachment Type (None)

MOC Number * 100244

Please ensure you save the MOC record before uploading this document

Integration with DocWorkspace



Demo



Questions?

Email: moe.el-husseini@megenergy.com

Direct: 403-767-6222